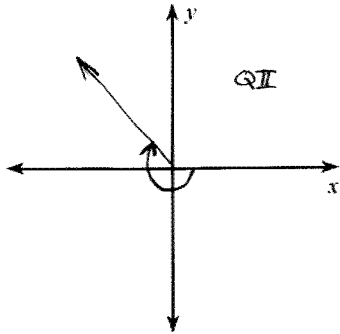


PreCalculus
Angles in Standard Position WS

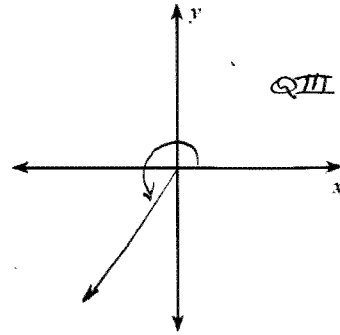
Name Fusten

Draw an angle with the given measure in standard position.

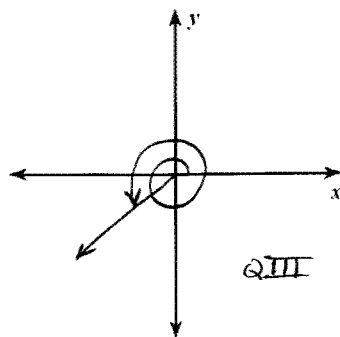
1) $-\frac{5\pi}{4}$



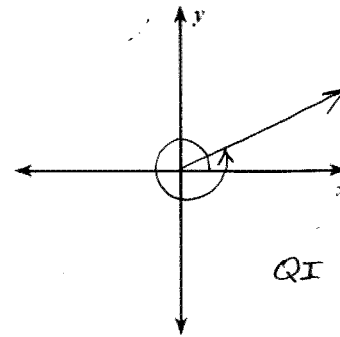
2) 235°



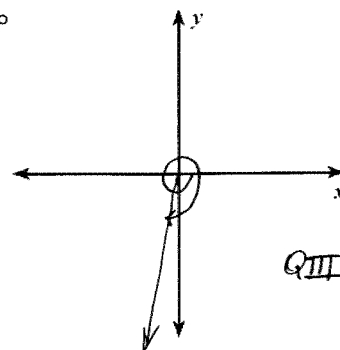
3) 576°



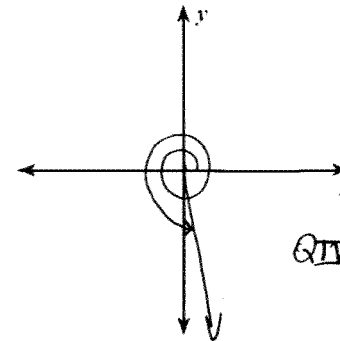
4) $\frac{13\pi}{6}$



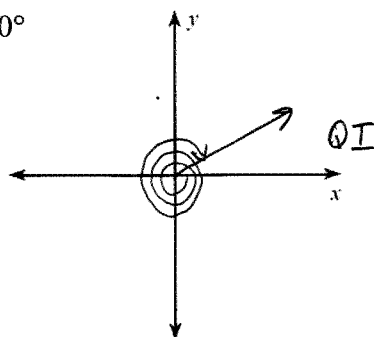
5) -452°



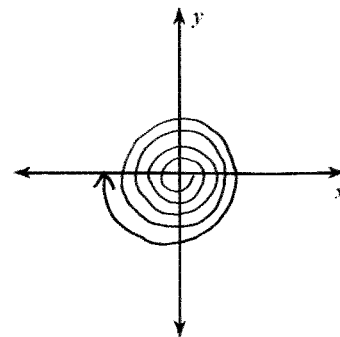
6) $\frac{43\pi}{12}$



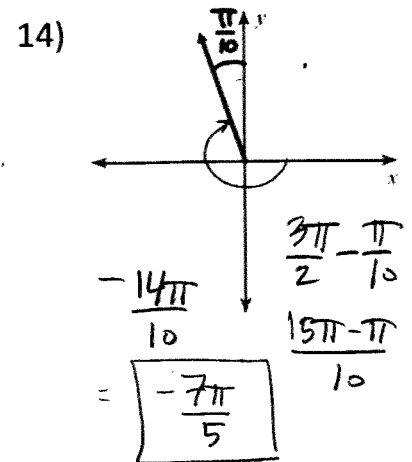
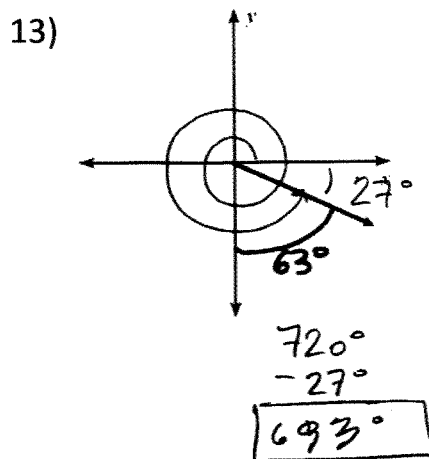
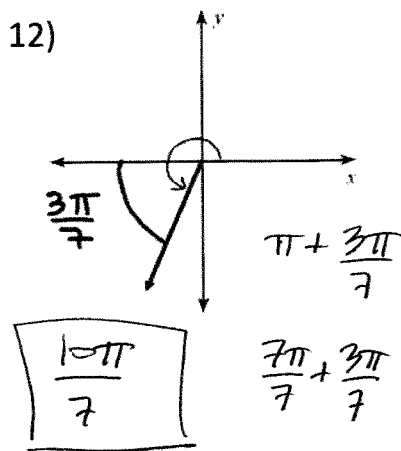
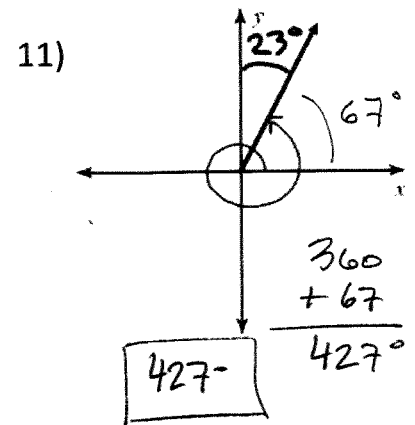
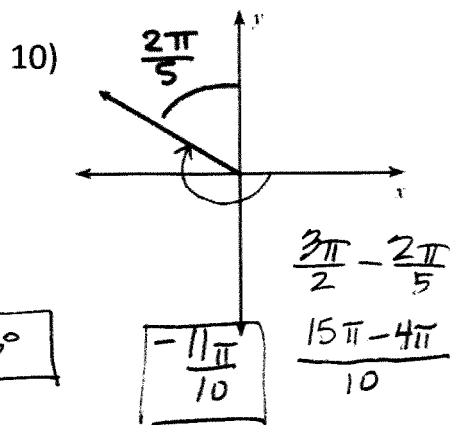
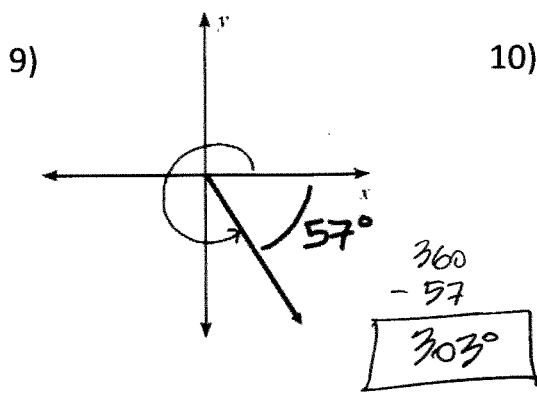
7) -1050°



8) -9π



Find the measure of each angle, using the same degree measure as shown in each picture.



State the quadrant in which the terminal side of each angle lies.

15) $\frac{5\pi}{3}$ QIV

16) $-\frac{11\pi}{5}$ QIV

17) 235π negative x-axis

18) 2500°
 40°
QIV

19) $-\frac{17\pi}{6}$
QIII

20) $\frac{13\pi}{18}$
QII