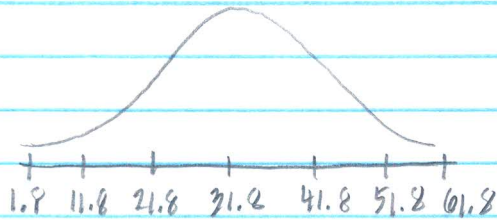


Normal Distributions W2

1.



$$50\% - 34\% = \boxed{16\%}$$

} same idea!

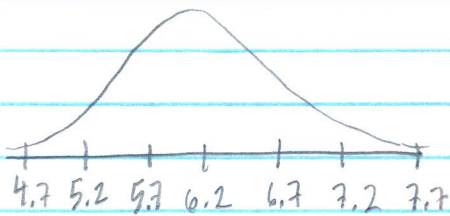
b)



$$\boxed{16\%}$$

c) Yes - that is at the 97.5 percentile

2.



a)



84%

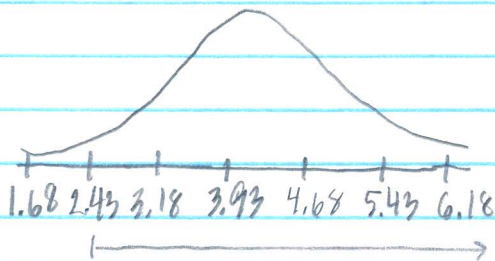
$$\boxed{6.7}$$

b)



$\boxed{5.2 \text{ to } 7.2}$

3.

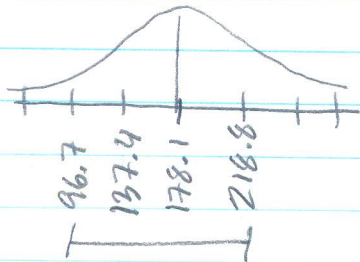


$$100\% - 2.35\% - 0.15\%$$

97.5%

$$\boxed{P = 0.975}$$

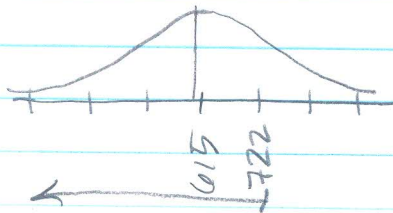
4.



$$13.5 + 34 + 34 = 81.5$$

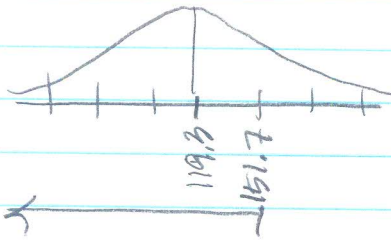
$$P = 0.815$$

5.



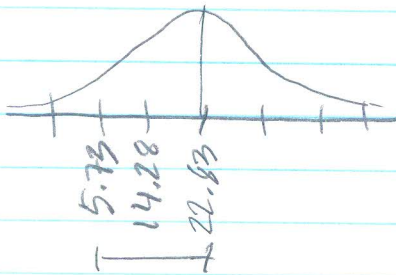
$$722$$

6.



$$84\%$$

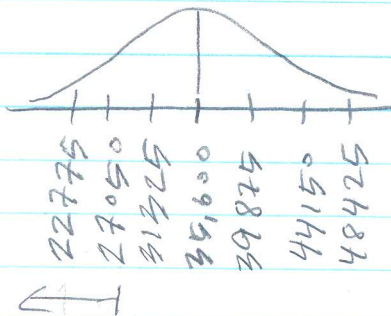
7.



$$13.5 + 34 = 47.5$$

$$P = 0.475$$

8.



$$27,050 \text{ miles}$$